



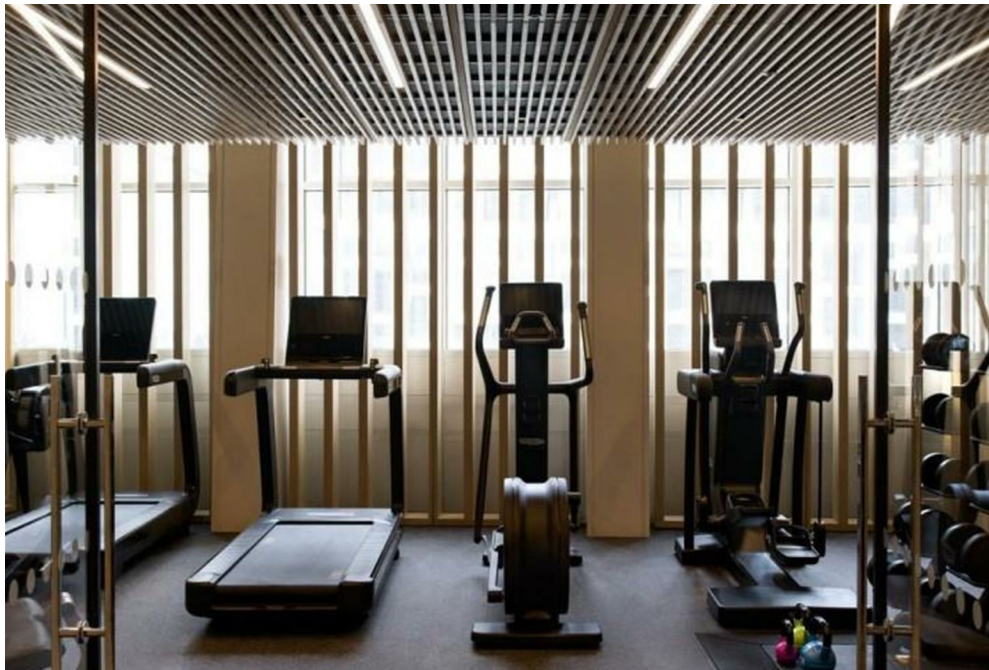
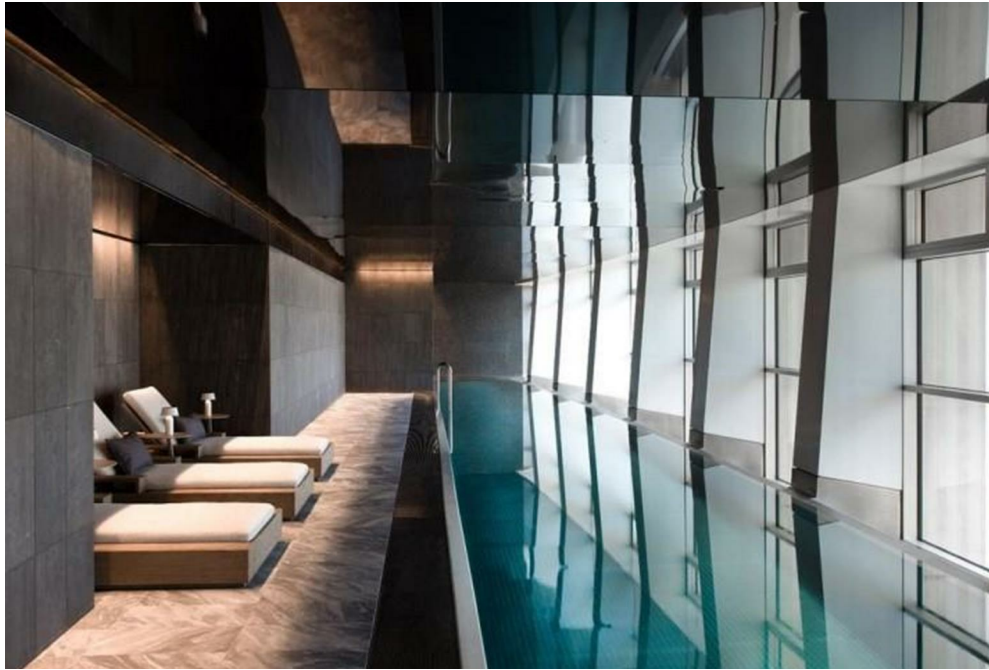
Centre Point, 101-103 New Oxford Street,  
, WC1A

£1,150 Per Week,

NAPIER WATT

T: 0207 935 0011  
E: [enquiries@napierwatt.co.uk](mailto:enquiries@napierwatt.co.uk)  
W: [napierwatt.co.uk](http://napierwatt.co.uk)

35 Berkeley Square, Mayfair, London, W1J 5BF







## Description

Situated directly opposite Tottenham Court underground station, this immaculate one bedroom apartment is spread laterally with a high specification finish, including air-conditioning. The apartment of approximately 748sq ft comprises, a large reception, kitchen, master bedroom suite with en-suites and a guest cloakroom and boasts a Creston home automation, electronic blinds, as well as modern kitchen and bathrooms with German appliances and fittings. The interior of the apartment is well-proportioned and has some of the most incredible views across central London. With concierge, gym, swimming pool, AC and a great location, this building is highly sought-after. The apartment has a wealth of space on the sixth floor, accessed from a generous foyer, shared with only one other apartment affording residents rarely achieved levels of privacy.

1 Bedroom : 1 En-Suite : Guest Cloakroom : Lift : Pool : Gym : 24-Hour Concierge : EPC Rating B

## Key Features

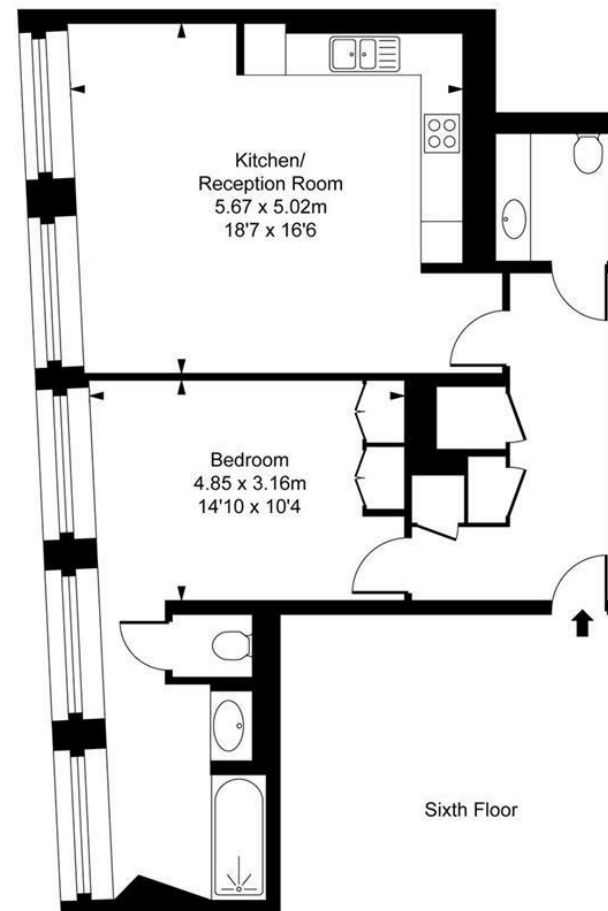
- CONCIERGE
- GYMNASIUM
- RESIDENTS LOUNGE
- AIR-CONDITIONING
- SWIMMING POOL
- HIGH FLOOR

## Terms

Fees & Charges: Tenancies exceeding £100,000 Per annum £480 inc VAT, Tenancies where a company is a tenant £480 Inc VAT.



Centre Point,  
New Oxford Street, WC1A  
Approximate Gross Internal Area  
69.49 sq m / 748 sq ft



This plan is not to scale. It is for guidance and not for valuation purposes.  
All measurements and areas are approximate only, and have been prepared in accordance with the current edition of the RICS Code of Measuring Practice.  
© Fulham Performance

IMPORTANT: We would inform prospective purchasers that these sales particulars have been prepared as a general guide only. A detailed survey has not been carried out, nor the services, appliances and fittings tested. Room sizes should not be relied upon for furnishing purposes and are approximate. If floor plans are included, they are for guidance only and illustration purposes only and may not be to scale. If there are any important matters likely to affect your decision to buy, please contact us before viewing the property.